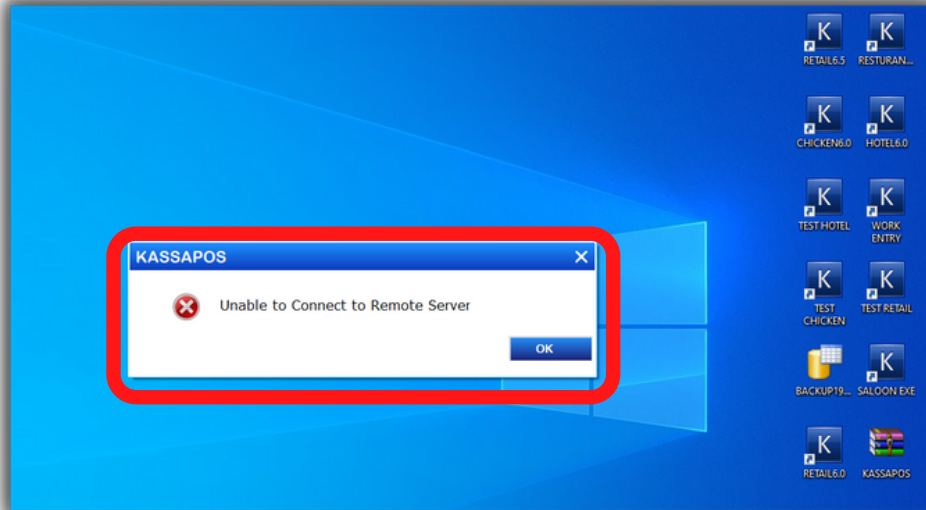


How To Solve The Unable To Remote Server

Single Computer



Step1: Search The SQL Server Configuration Manager

Note: If SQL Server is not showing then go to Step2

Step2: If System Type 64 Bit, then Choose the File Path as

Note: C:\Windows\SysWOW64\SqllserverManager11

OR

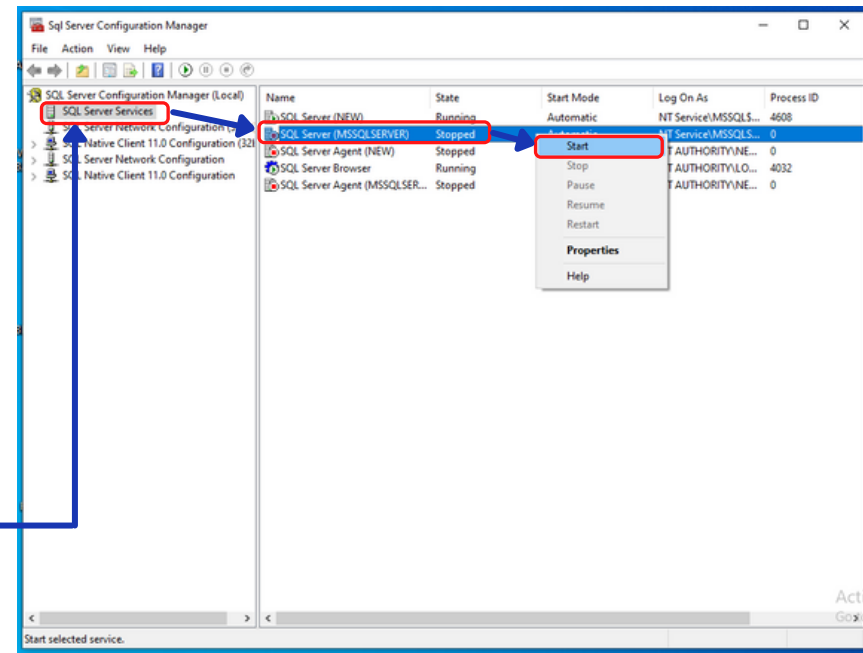
If System Type 32 Bit then, choose the File Path as

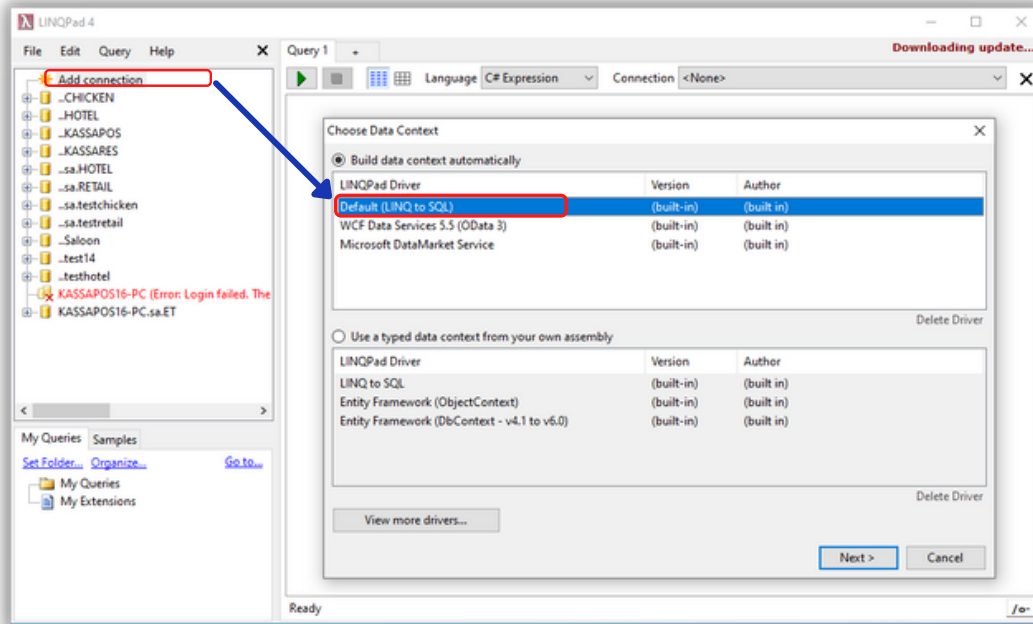
Note: C:\Windows\System32\SqllserverManager11

Step3: Check if the SQL Server Service, MSSQLSERVER services are stopped

Then Right Click and select start option, SQL Services are started and problem is fixed.

If still issue continues, start the new installation through timely Fashion Error.





**Step4: Open The Linqpad & Click The Add Connection
Select The Default (Linq to SQL) option then Click The
Next Button**

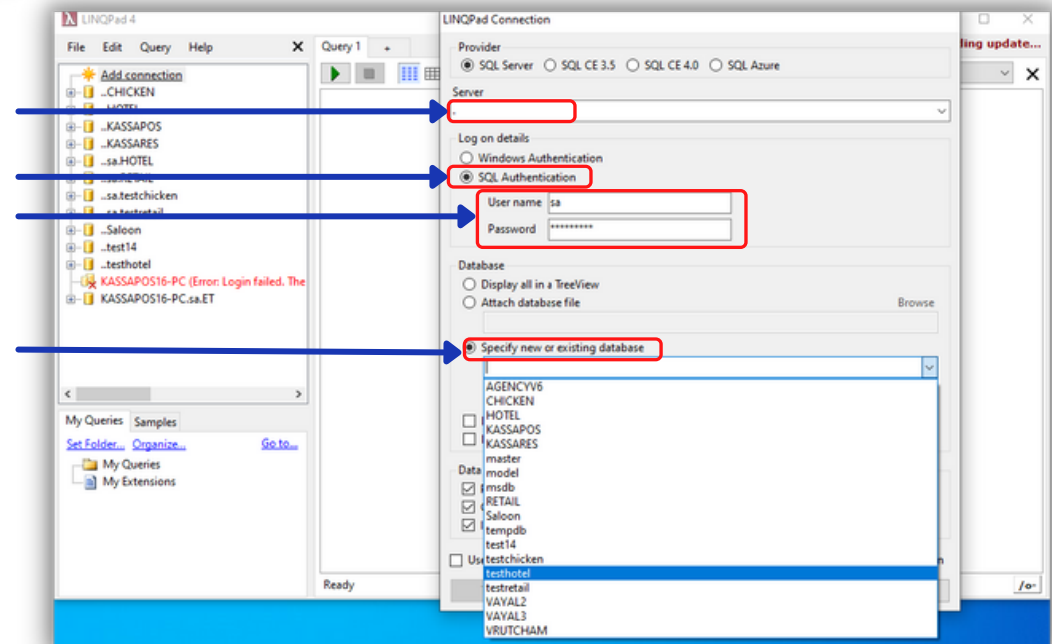
Step5: Enter The Server Name

Step6: Click The SQL Authentication

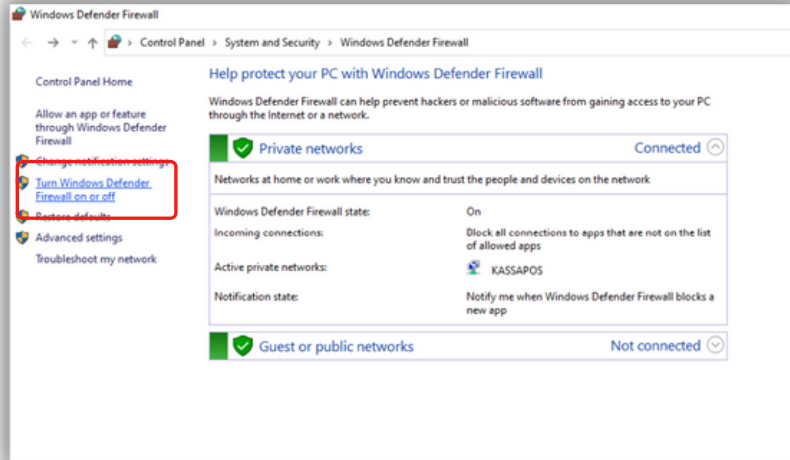
Step7: Enter The User Name & Password

Step8: Click and Search The Database

**Step9: If The Database Status is Yes, It is 'Single Data
suspect' If Not, It is Data suspect'**



Client Computer



Step1: If The Firewall is ON then make it to OFF & Check The Server & Client System

Step2: Check The IP Ping Command from server To Client, Client To Server is working fine.

Step3: Check Any Antivirus is blocking the Software

```
Administrator: Command Prompt
Microsoft Windows [Version 10.0.19043.1466]
(c) Microsoft Corporation. All rights reserved.
C:\Windows\system32>Ping 192.168.1.50

Pinging 192.168.1.50 with 32 bytes of data:
Reply from 192.168.1.50: bytes=32 time=9ms TTL=128
Reply from 192.168.1.50: bytes=32 time=2ms TTL=128
Reply from 192.168.1.50: bytes=32 time=2ms TTL=128
Reply from 192.168.1.50: bytes=32 time=2ms TTL=128

Ping statistics for 192.168.1.50:
    Packets: Sent = 4, Received = 4, Lost = 0 (0% loss),
    Approximate round trip times in milli-seconds:
        Minimum = 2ms, Maximum = 9ms, Average = 3ms
C:\Windows\system32>
```